

Appendix 1: Operations Summary Report for the Quarter Ended June 30, 2014

	A	B	C	D	E	F	G	H	I
Routes	Actual Round Trips	Capacity Provided (AEQ's)	AEQ's Carried QTR 1 F2015	Capacity Utilization (C / B)	AEQ's Carried QTR 1 F2014	AEQ Growth (C - E)	AEQ Tariff Revenue QTR 1 F2015 Note 2	AEQ Tariff Revenue QTR 1 F2014	AEQ Tariff Revenue Growth (G - H)
1	941.0	725,770	541,086	74.6%	532,933	8,153	\$ 29,835,055	\$ 27,832,910	\$ 2,002,145
2	764.0	554,714	323,588	58.3%	327,583	(3,995)	16,798,811	16,268,686	530,125
3	743.0	537,932	307,312	57.1%	305,515	1,797	6,700,677	6,296,342	404,335
30	675.0	435,470	212,922	48.9%	211,985	937	14,055,173	13,477,974	577,199
Major Routes	3,123.0	2,253,886	1,384,908	61.4%	1,378,016	6,892	67,389,716	63,875,912	3,513,804
10	22.0	6,976	3,296	47.2%	3,547	(251)	939,071	1,099,270	(160,199)
11	33.0	6,666	4,425	66.4%	4,608	(183)	890,454	806,580	83,874
Northern Routes	55.0	13,642	7,721	56.6%	8,155	(434)	1,829,525	1,905,850	(76,325)
4	718.0	143,540	80,046	55.8%	78,394	1,652	861,941	826,595	35,346
5	873.0	179,448	67,930	37.9%	68,390	(460)	832,101	808,451	23,650
6	1,195.0	167,300	61,606	36.8%	64,060	(2,454)	747,107	728,150	18,957
7	654.0	159,640	44,690	28.0%	45,806	(1,116)	973,976	962,490	11,486
8	1,349.5	235,110	122,796	52.2%	124,177	(1,381)	1,396,024	1,311,317	84,707
9	192.0	87,800	38,839	44.2%	38,507	332	1,656,905	1,550,165	106,740
12	806.0	35,464	20,421	57.6%	23,118	(2,697)	230,009	254,775	(24,766)
13	1,012.0	Pass. Only	Pass. Only	Pass. Only	Pass. Only	Pass. Only	(183)	(7)	(176)
17	349.0	125,516	39,805	31.7%	40,776	(971)	1,437,357	1,396,235	41,122
18	798.0	61,856	20,610	33.3%	22,565	(1,955)	147,498	162,153	(14,655)
19	1,278.0	178,920	88,177	49.3%	94,463	(6,286)	742,974	758,391	(15,417)
20	973.0	62,272	20,921	33.6%	20,734	187	173,054	160,052	13,002
21	1,386.0	138,600	59,568	43.0%	61,736	(2,168)	425,841	415,722	10,119
22	1,063.0	63,780	24,602	38.6%	25,896	(1,294)	180,706	172,783	7,923
23	1,484.0	207,760	95,537	46.0%	94,781	756	766,079	727,495	38,584
24	534.0	32,040	14,437	45.1%	14,432	5	134,754	127,898	6,856
25	989.0	59,340	22,372	37.7%	19,443	2,929	237,528	187,083	50,445
26	858.0	44,616	12,467	27.9%	13,955	(1,488)	119,665	123,986	(4,321)
Minor Routes	16,511.5	1,983,002	834,824	42.1%	851,233	(16,409)	11,063,336	10,673,734	389,602
Total	19,689.5	4,250,530	2,227,453	52.4%	2,237,404	(9,951)	80,282,577	76,455,496	3,827,081

Note 4

Note 1

Obligation deferred (settled) - 1,730,131

Total vehicle fare revenue 80,282,577 78,185,627

Note 1) Revenue arises from bike traffic and freight.

Note 2) Tariffs charged to customer on all routes were below price cap at June 30, 2014. At June 30, 2013 the routes were over price cap by \$2.7 million (Vehicles \$1.7 million and Passengers \$1.0 million).

Note 3) Indicates percentage of sailings departing within 10 minutes of scheduled departure for the Major and Minor Routes, and arriving within 10 minutes of scheduled arrival for the Northern Routes.

Note 4) Effective April 1, 2014, Route 40 was discontinued as part of the service adjustments outlined by the Province, and replaced with an extension of Route 10. For comparative purposes, reporting of AEQ and passenger totals, tariff revenues and on-time performance for Routes 10 and 40 in the prior years have been combined.

Appendix 1: Operations Summary Report for the Quarter Ended June 30, 2014

Routes	J	K	L	M	N	O
	Passengers QTR 1 F2015	Passengers QTR 1 F2014	Passenger Growth (J - K)	Passenger Tariff Revenue QTR 1 F2015 Note 2	Passenger Tariff Revenue QTR 1 F2014	Passenger Tariff Revenue Growth (M - N)
1	1,455,029	1,424,536	30,493	\$ 21,127,870	\$ 18,623,754	\$ 2,504,116
2	817,297	810,311	6,986	11,956,183	10,514,576	1,441,607
3	628,874	619,811	9,063	3,826,808	3,327,827	498,981
30	329,573	322,953	6,620	4,781,812	4,108,784	673,028
Major Routes	3,230,773	3,177,611	53,162	41,692,673	36,574,941	5,117,732
10	8,331	9,182	(851)	1,044,268	1,177,130	(132,862)
11	8,069	8,916	(847)	294,247	310,394	(16,147)
Northern Routes	16,400	18,098	(1,698)	1,338,515	1,487,524	(149,009)
4	160,198	156,420	3,778	801,696	696,142	105,554
5	118,305	118,216	89	565,380	478,472	86,908
6	114,850	119,189	(4,339)	463,054	419,723	43,331
7	76,938	76,279	659	436,619	393,055	43,564
8	290,270	294,453	(4,183)	970,497	869,009	101,488
9	108,269	106,310	1,959	1,327,289	1,123,977	203,312
12	40,009	44,723	(4,714)	213,360	197,829	15,531
13	10,374	11,119	(745)	43,480	40,020	3,460
17	85,023	85,789	(766)	1,024,763	912,500	112,263
18	37,856	39,912	(2,056)	123,757	111,761	11,996
19	188,331	195,789	(7,458)	569,201	506,144	63,057
20	63,338	65,859	(2,521)	161,283	143,906	17,377
21	110,289	116,735	(6,446)	305,581	281,257	24,324
22	44,826	49,168	(4,342)	132,823	115,992	16,831
23	198,685	200,460	(1,775)	553,483	489,473	64,010
24	23,766	24,361	(595)	90,430	79,624	10,806
25	55,964	54,147	1,817	204,608	181,114	23,494
26	22,771	25,549	(2,778)	70,437	72,567	(2,130)
Minor Routes	1,750,062	1,784,478	(34,416)	8,057,741	7,112,565	945,176
Total	4,997,235	4,980,187	17,048	51,088,929	45,175,030	5,913,899

% Sailings Within 10 Min. (Note 3)		
QTR 1 F2013	QTR 1 F2014	QTR 1 F2015
84.7%	89.8%	90.6%
80.2%	71.9%	72.9%
81.2%	60.2%	68.5%
91.1%	94.9%	95.3%
84.2%	79.5%	82.1%
90.9%	87.0%	87.4%
98.8%	98.8%	93.9%
93.2%	87.7%	88.9%
95.5%	93.5%	95.8%
84.8%	85.8%	86.4%
92.8%	86.2%	82.5%
95.6%	85.9%	93.3%
89.4%	93.4%	87.3%
82.0%	87.1%	86.5%
89.5%	98.0%	93.7%
99.4%	99.7%	100.0%
96.4%	94.6%	94.5%
92.2%	89.6%	94.2%
96.2%	96.7%	89.3%
84.6%	83.8%	91.8%
99.2%	99.4%	97.6%
96.8%	98.7%	98.2%
99.0%	98.9%	99.0%
95.6%	93.8%	91.0%
90.4%	80.0%	87.6%
99.5%	97.9%	97.7%
93.3%	92.5%	92.4%
92.0%	90.7%	90.9%

Obligation deferred (settled) - 1,022,277

Total passenger fare revenue	51,088,929	46,197,307
Total vehicle and passenger fare revenue per financial statements	131,371,506	124,382,934

Appendix 3a - CANCELLED ROUND TRIPS BY ROUTES

PERFORMANCE AGAINST MINIMUM (DAILY) CORE SERVICE LEVELS

Fiscal 2014/15 Quarter Ended June 30, 2014				Cancellations of Minimum Required Round Trips for Reasons Specified in Schedule A, 2(a) of the Coastal Ferry Services Contract											Cancellations of Minimum Required Round Trips for Other Reasons			Total Cancellations	% of Minimum Required Round Trips Cancelled
Routes	Terminal 1	Terminal 2	Major Incident	Weather	Emerg. Response	Medical Emerg.	Regulatory Issue	Terminal / Dock Maint.	Terminal / Dock Mech. Failure	Vessel Maint.	Vessel Mech. Failure	Fire	Labour Dispute	Allowed Cancellations	Community Event	Traffic	Other Cancellations		
Route 01	Swartz Bay	Tsawwassen												0.0			0.0	0.0	0.00%
Route 02	Horseshoe Bay	Departure Bay												0.0			0.0	0.0	0.00%
Route 03	Langdale	Horseshoe Bay												0.0			0.0	0.0	0.00%
Route 30	Duke Point	Tsawwassen												0.0			0.0	0.0	0.00%
Major Routes			0	0	0	0	0	0	0	0	0	0	0	0.0	0	0	0.0	0.0	0.00%
Route 10	Port Hardy	Prince Rupert												0.0			0.0	0.0	0.00%
Route 11	Skidegate	Prince Rupert		1										1.0			0.0	1.0	2.94%
Northern Routes			0	1	0	0	0	0	0	0	0	0	0	1.0	0	0	0.0	1.0	1.79%
Route 04	Fulford Harbour	Swartz Bay												0.0			0.0	0.0	0.00%
Route 05	Swartz Bay	Four SGIs												0.0			0.0	0.0	0.00%
Route 06	Crofton	Vesuvius Bay												0.0			0.0	0.0	0.00%
Route 07	Earls Cove	Saltery Bay												0.0			0.0	0.0	0.00%
Route 08	Horseshoe Bay	Bowen Island												0.0			0.0	0.0	0.00%
Route 09	Tsawwassen	Long Harbour												0.0			0.0	0.0	0.00%
Route 12	Mill Bay	Brentwood Bay												0.0			0.0	0.0	0.00%
Route 13 ⁽¹⁾	Langdale	Gambier/Keats												0.0			0.0	0.0	0.00%
Route 17	Little River	Powell River												0.0			0.0	0.0	0.00%
Route 18	Texada	Powell River									2			2.0			0.0	2.0	0.30%
Route 19	Nanaimo Harbour	Gabriola Island												0.0			0.0	0.0	0.00%
Route 20	Chemainus	Thetis Island												0.0			0.0	0.0	0.00%
Route 21	Buckley Bay	Denman West					1							1.0			0.0	1.0	0.08%
Route 22	Denman East	Hornby Island					1							1.0			0.0	1.0	0.11%
Route 23	Campbell River	Quadra Island												0.0			0.0	0.0	0.00%
Route 24	Quadra Island	Cortes Island												0.0			0.0	0.0	0.00%
Route 25	Port McNeill	Alert Bay												0.0			0.0	0.0	0.00%
Route 26	Skidegate	Alliford Bay		6										6.0			0.0	6.0	0.81%
Minor Routes			0	6	0	0	2	0	0	0	2	0	0	10.0	0	0	0.0	10.0	0.07%
TOTAL			0.0	7.0	0.0	0.0	2.0	0.0	0.0	0.0	2.0	0.0	0.0	11.0	0.0	0.0	0.0	11.0	0.06%

% of Minimum Required Round Trips Cancelled 0.00% 0.04% 0.00% 0.00% 0.01% 0.00% 0.00% 0.00% 0.00% 0.01% 0.00% 0.00% 0.06% 0.00% 0.00% 0.00% 0.06%

Note: ⁽¹⁾Route 13 core service levels include some round trips that are deliverable only 'on demand.'

Appendix 3b(1) - CANCELLED & EXTRA ROUND TRIPS BY ROUTES

Fiscal 2014/15 Quarter Ended June 30, 2014			
Routes		Terminal 1	Terminal 2
	Route 01	Swartz Bay	Tsawwassen
	Route 02	Horseshoe Bay	Departure Bay
	Route 03	Langdale	Horseshoe Bay
	Route 30	Duke Point	Tsawwassen
Major Routes			
	Route 10	Port Hardy	Prince Rupert
	Route 11	Skidegate	Prince Rupert
Northern Routes			
	Route 04	Fulford Harbour	Swartz Bay
	Route 05	Swartz Bay	Four SGIs
	Route 06	Crofton	Vesuvius Bay
	Route 07	Earls Cove	Saltery Bay
	Route 08	Horseshoe Bay	Bowen Island
	Route 09	Tsawwassen	Long Harbour
	Route 12	Mill Bay	Brentwood Bay
	Route 13 ⁽²⁾	Langdale	Gambier/Keats
	Route 17	Little River	Powell River
	Route 18	Texada	Powell River
	Route 19	Nanaimo Harbour	Gabriola Island
	Route 20	Chemainus	Thetis Island
	Route 21	Buckley Bay	Denman West
	Route 22	Denman East	Hornby Island
	Route 23	Campbell River	Quadra Island
	Route 24	Quadra Island	Cortes Island
	Route 25	Port McNeill	Alert Bay
	Route 26	Skidegate	Alliford Bay
Minor Routes			
TOTAL			

Performance Against Minimum (Daily) Core Service Levels 1st Quarter			
Actual Round Trips⁽¹⁾	Daily Minimum Required Round Trips	Variance (Actual to Minimum)	Cancellations of Minimum Required Round Trips
941.0	673.0	268.0	0.0
764.0	651.0	113.0	0.0
743.0	636.0	107.0	0.0
675.0	565.0	110.0	0.0
3,123.0	2,525.0	598.0	0.0
22.0	22.0	0.0	0.0
33.0	34.0	-1.0	1.0
55.0	56.0	-1.0	1.0
718.0	625.0	93.0	0.0
873.0	873.0	0.0	0.0
1,195.0	1,106.0	89.0	0.0
654.0	561.0	93.0	0.0
1,349.5	1,256.5	93.0	0.0
192.0	192.0	0.0	0.0
806.0	715.0	91.0	0.0
1,012.0	932.0	80.0	0.0
349.0	347.0	2.0	0.0
798.0	673.0	125.0	2.0
1,278.0	1,188.0	90.0	0.0
973.0	882.0	91.0	0.0
1,386.0	1,269.0	117.0	1.0
1,063.0	945.0	118.0	1.0
1,484.0	1,387.0	97.0	0.0
534.0	442.0	92.0	0.0
989.0	897.0	92.0	0.0
858.0	745.0	113.0	6.0
16,511.5	15,035.5	1,476.0	10.0
19,689.5	17,616.5	2,073.0	11.0

Notes: ⁽¹⁾ In certain circumstances (e.g. vessel or dock breakdown, mechanical failure or maintenance) round trips may be provided by contracted service providers (e.g. water taxi, tug & barge, flights).

⁽²⁾ Route 13 core service levels include some round trips that are deliverable only 'on demand.'

Appendix 3b(2) - CANCELLED & EXTRA ROUND TRIPS BY ROUTES

Fiscal 2014/15			
Quarter Ended June 30, 2014			
Routes	Terminal 1	Terminal 2	
	Route 01	Swartz Bay	Tsawwassen
	Route 02	Horseshoe Bay	Departure Bay
	Route 03	Langdale	Horseshoe Bay
	Route 30	Duke Point	Tsawwassen
Major Routes			
	Route 10	Port Hardy	Prince Rupert
	Route 11	Skidegate	Prince Rupert
Northern Routes			
	Route 04	Fulford Harbour	Swartz Bay
	Route 05	Swartz Bay	Four SGIs
	Route 06	Crofton	Vesuvius Bay
	Route 07	Earls Cove	Saltery Bay
	Route 08	Horseshoe Bay	Bowen Island
	Route 09	Tsawwassen	Long Harbour
	Route 12	Mill Bay	Brentwood Bay
	Route 13 ⁽²⁾	Langdale	Gambier/Keats
	Route 17	Little River	Powell River
	Route 18	Texada	Powell River
	Route 19	Nanaimo Harbour	Gabriola Island
	Route 20	Chemainus	Thetis Island
	Route 21	Buckley Bay	Denman West
	Route 22	Denman East	Hornby Island
	Route 23	Campbell River	Quadra Island
	Route 24	Quadra Island	Cortes Island
	Route 25	Port McNeill	Alert Bay
	Route 26	Skidegate	Alliford Bay
Minor Routes			
TOTAL			

Performance Against Estimated Schedule				
1st Quarter				
Actual Round Trips ⁽¹⁾	Round Trips Per Estimated Schedule	Variance (Actual to Estimated Schedule)	Cancelled Round Trips from Estimated Schedule	Total Extra / Short Round Trips
941.0	953.0	-12.0	13.0	1.0
764.0	766.0	-2.0	3.0	1.0
743.0	727.0	16.0	0.0	16.0
675.0	676.0	-1.0	1.0	0.0
3,123.0	3,122.0	1.0	17.0	18.0
22.0	22.0	0.0	0.0	0.0
33.0	34.0	-1.0	1.0	0.0
55.0	56.0	-1.0	1.0	0.0
718.0	716.0	2.0	0.0	2.0
873.0	873.0	0.0	0.0	0.0
1,195.0	1,197.0	-2.0	2.0	0.0
654.0	652.0	2.0	1.0	3.0
1,349.5	1,349.5	0.0	0.0	0.0
192.0	192.0	0.0	0.0	0.0
806.0	806.0	0.0	0.0	0.0
1,012.0	1,023.0	-11.0	27.0	16.0
349.0	347.0	2.0	0.0	2.0
798.0	796.0	2.0	7.0	9.0
1,278.0	1,279.0	-1.0	1.0	0.0
973.0	973.0	0.0	0.0	0.0
1,386.0	1,360.0	26.0	2.0	28.0
1,063.0	1,036.0	27.0	2.0	29.0
1,484.0	1,478.0	6.0	0.0	6.0
534.0	533.0	1.0	0.0	1.0
989.0	988.0	1.0	0.0	1.0
858.0	853.0	5.0	10.0	15.0
16,511.5	16,451.5	60.0	52.0	112.0
19,689.5	19,629.5	60.0	70.0	130.0

Notes: ⁽¹⁾ In certain circumstances (e.g. vessel or dock breakdown, mechanical failure or maintenance) round trips may be provided by contracted service providers (e.g. water taxi, tug & barge, flights).

⁽²⁾ Route 13 core service levels include some round trips that are deliverable only 'on demand.'

Appendix 3c - CANCELLED ROUND TRIPS BY ROUTES

(For Cancellations of Minimum Required Round Trips for Reasons Specified in Schedule A. 2(a) of the Coastal Ferry Services Contract)

Fiscal 2014/15 Quarter Ended June 30, 2014				Performance Against Minimum (Daily) Core Service Levels	
Routes				Cumulative Days When Round Trips Missed <i>Allowed 30 Days / Route</i>	Highest Consecutive Days when Round Trips Missed <i>Allowed 20 Days / Route</i>
Major Routes	Route 01	Swartz Bay	Tsawwassen	0.0	
	Route 02	Horseshoe Bay	Departure Bay	0.0	
	Route 03	Langdale	Horseshoe Bay	0.0	
	Route 30	Duke Point	Tsawwassen	0.0	
Northern Routes	Route 10	Port Hardy	Prince Rupert	0.0	
	Route 11	Skidegate	Prince Rupert	2.0	2.0
Minor Routes	Route 04	Fulford Harbour	Swartz Bay	0.0	
	Route 05	Swartz Bay	Four SGIs	0.0	
	Route 06	Crofton	Vesuvius Bay	0.0	
	Route 07	Earls Cove	Saltery Bay	0.0	
	Route 08	Horseshoe Bay	Bowen Island	0.0	
	Route 09	Tsawwassen	Long Harbour	0.0	
	Route 12	Mill Bay	Brentwood Bay	0.0	
	Route 13	Langdale	Gambier/Keats	0.0	
	Route 17	Little River	Powell River	0.0	
	Route 18	Texada	Powell River	2.0	1.0
	Route 19	Nanaimo Harbour	Gabriola Island	0.0	
	Route 20	Chemainus	Thetis Island	0.0	
	Route 21	Buckley Bay	Denman West	1.0	1.0
	Route 22	Denman East	Hornby Island	1.0	1.0
	Route 23	Campbell River	Quadra Island	0.0	
	Route 24	Quadra Island	Cortes Island	0.0	
Route 25	Port McNeill	Alert Bay	0.0		
Route 26	Skidegate	Alliford Bay	2.0	2.0	

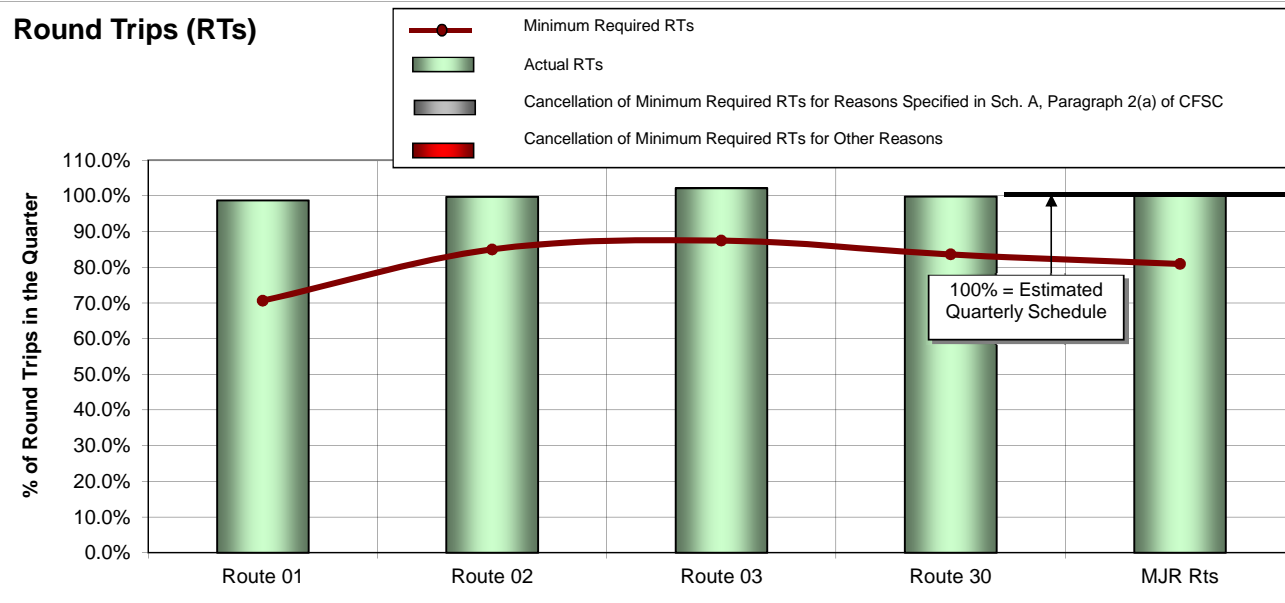
APPENDIX 4: Round Trip Service Delivery and On Time Performance

Fiscal 2014/15

Quarter Ended June 30, 2014

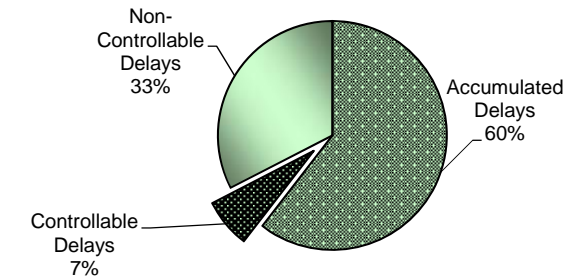
Major Routes

Round Trips (RTs)



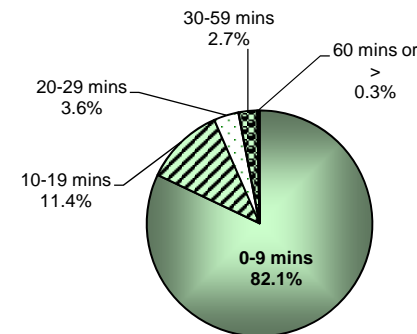
Routes	Route Description	Actual RTs	Minimum Required RTs	Variance (Actual to Minimum)	% Sailings Overloaded
Route 01	Swartz Bay-Tsawwassen	941.0	673.0	268.0	38.7%
Route 02	Horseshoe Bay-Nanaimo	764.0	651.0	113.0	22.9%
Route 03	Langdale-Horseshoe Bay	743.0	636.0	107.0	18.3%
Route 30	Nanaimo-Tsawwassen	675.0	565.0	110.0	15.0%
MAJOR Routes Total		3,123.0	2,525.0	598.0	24.9%

Reasons for Delays

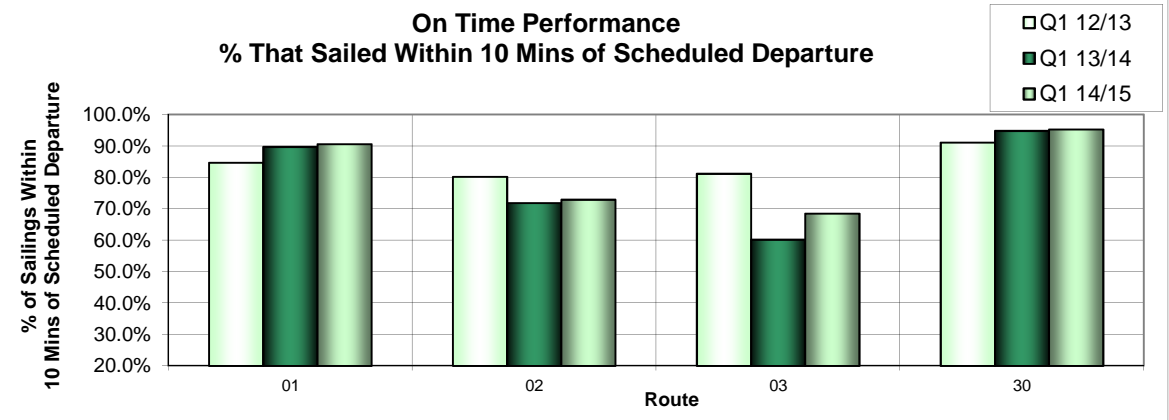


Controllable = Under the control of the company (loading procedure, fuelling, etc.)
Non-Controllable = Out of the control of the company (bad weather, medical, etc.)
Accumulated = Delays accumulated over the course of the day as a result of an earlier delay

On Time Performance 2014/15 Q1

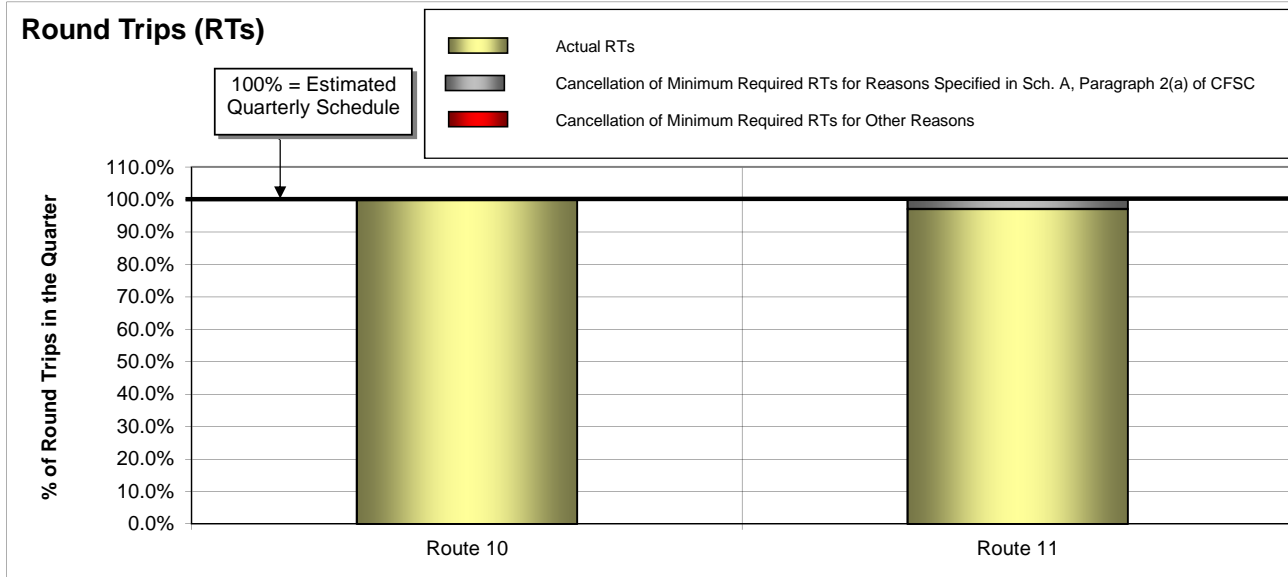


On Time Performance % That Sailed Within 10 Mins of Scheduled Departure

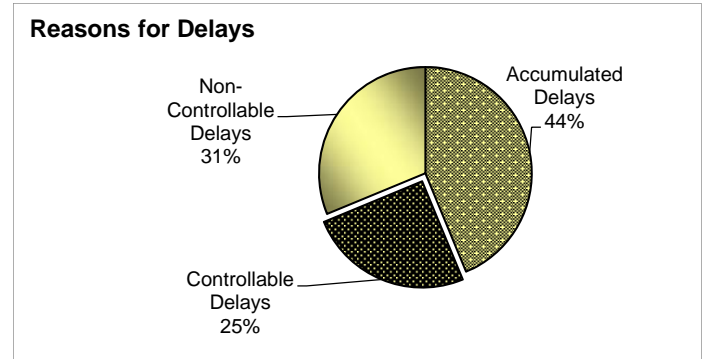


APPENDIX 4: Round Trip Service Delivery and On Time Performance Fiscal 2014/15 Quarter Ended June 30, 2014

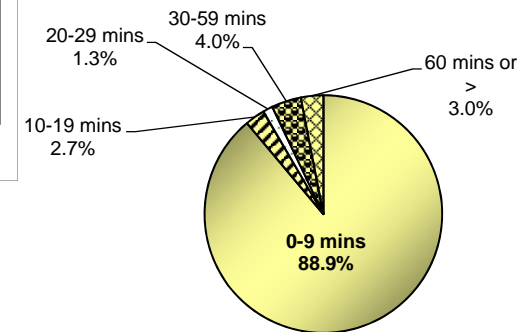
Northern Routes



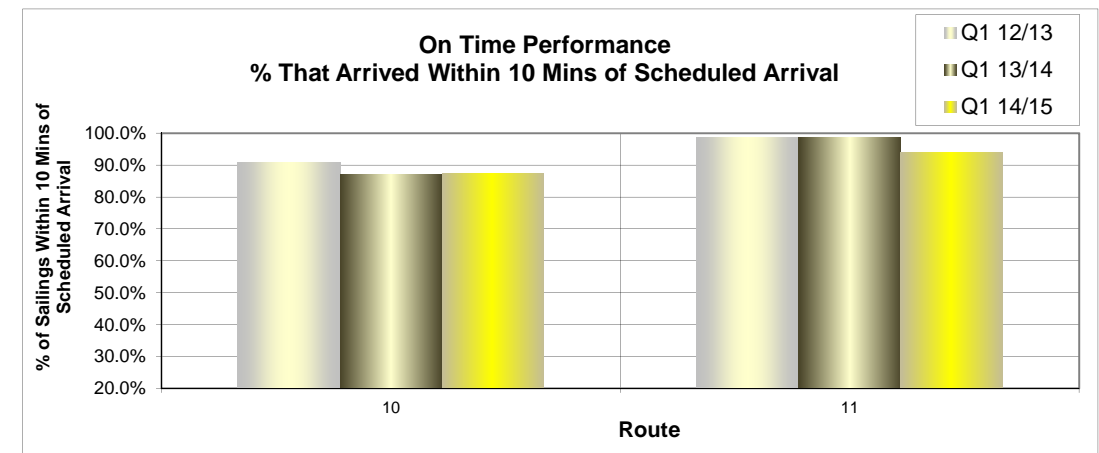
Routes	Route Description	Actual RTs	Minimum Required RTs	Variance (Actual to Minimum)	% Sailings Overloaded
Route 10 ⁽¹⁾	Port Hardy-Prince Rupert	22.0	22.0	0.0	0.0%
Route 11	Skidegate-Prince Rupert	33.0	34.0	-1.0	4.5%
NORTHERN Routes Total		55.0	56.0	-1.0	1.0%



On Time Performance 2014/15 Q1



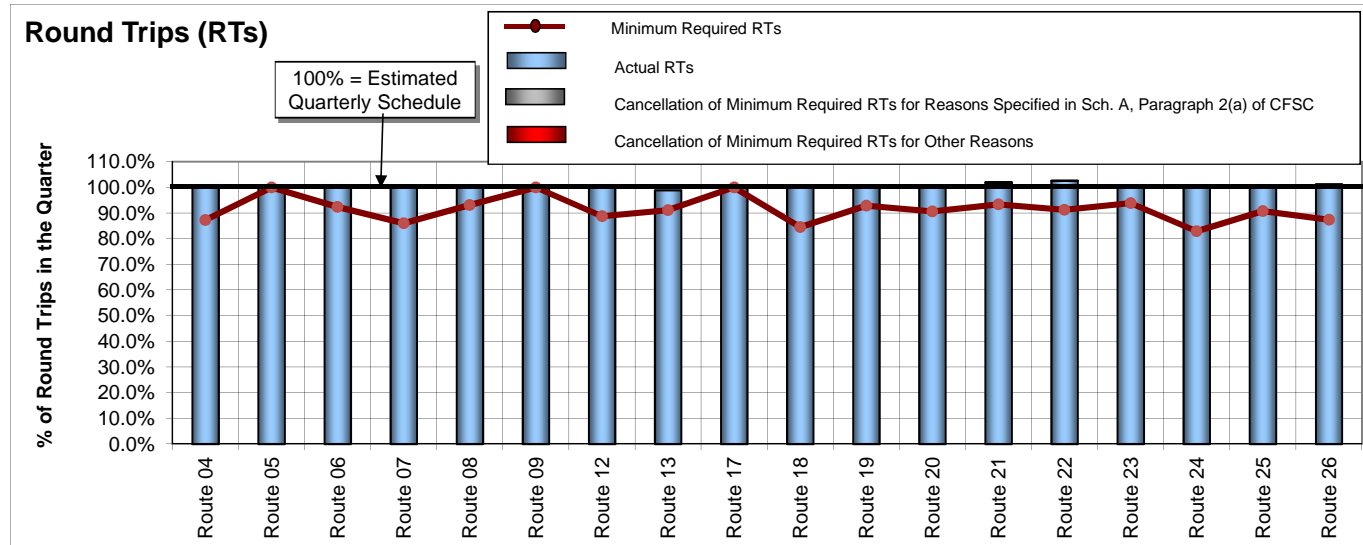
Controllable = Under the control of the company (loading procedure, fuelling, etc.)
Non-Controllable = Out of the control of the company (bad weather, medical, etc.)
Accumulated = Delays accumulated over the course of the day as a result of an earlier delay



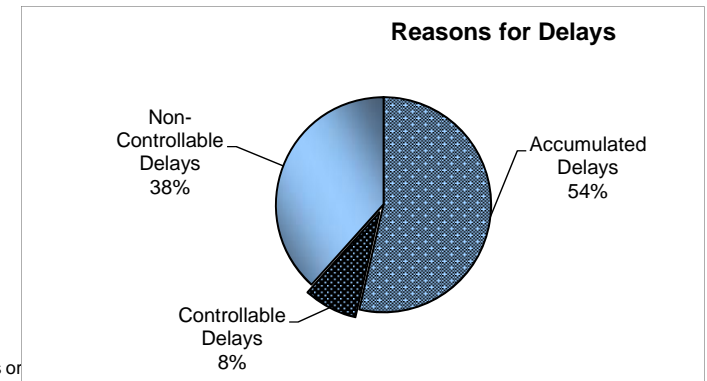
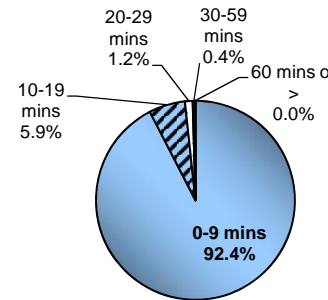
Note: ⁽¹⁾ Effective April 1, 2014, Route 40 was discontinued as part of the service adjustments outlined by the Province, and replaced with an extension of Route 10. For comparative purposes, fiscal 2013 and 2014 on-time performance for Routes 10 and 40 have been combined.

APPENDIX 4: Round Trip Service Delivery and On Time Performance Fiscal 2014/15 Quarter Ended June 30, 2014

Minor Routes

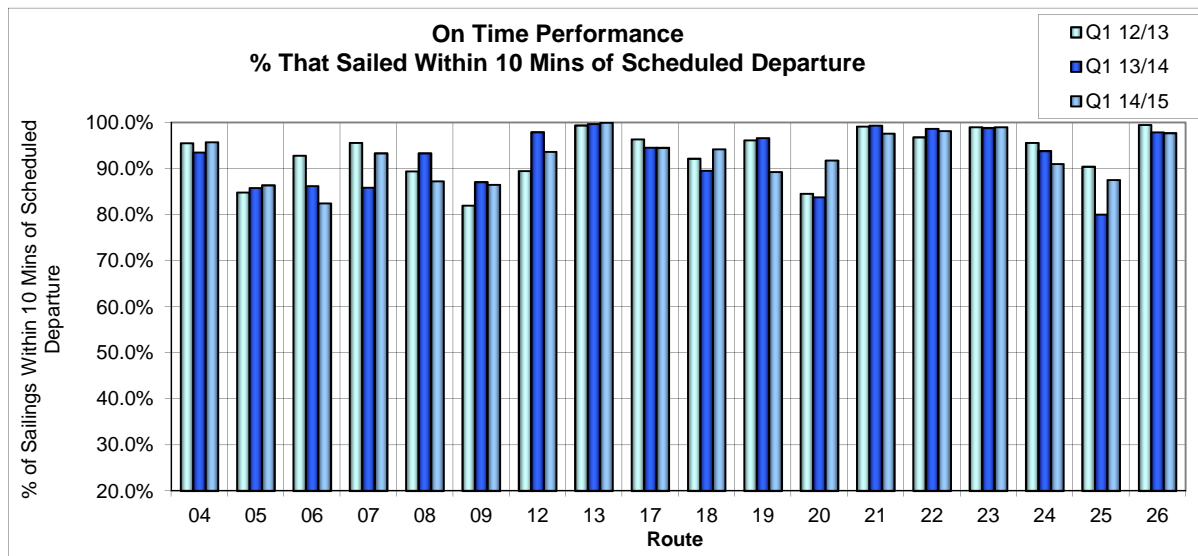


On Time Performance 2014/15 Q1



Controllable = Under the control of the company (loading procedure, fuelling, etc.)
Non-Controllable = Out of the control of the company (bad weather, medical, etc.)
Accumulated = Delays accumulated over the course of the day as a result of an earlier delay

Routes	Route Description	Actual RTs	Minimum Required RTs	Variance (Actual to Minimum)	% Sailings Overloaded
Route 04	Swartz Bay-Fulford Harbour	718.0	625.0	93.0	6.0%
Route 05	Swartz Bay-Gulf Islands	873.0	873.0	0.0	3.9%
Route 06	Crofton-Vesuvius Bay	1,195.0	1,106.0	89.0	1.9%
Route 07	Earls Cove-Saltery Bay	654.0	561.0	93.0	1.5%
Route 08	Horseshoe Bay-Bowen Island	1,349.5	1,256.5	93.0	9.1%
Route 09	Tsawwassen-Southern Gulf Islands	192.0	192.0	0.0	2.5%
Route 12	Mill Bay-Brentwood Bay	806.0	715.0	91.0	1.5%
Route 13 ⁽¹⁾	Langdale-Keats/Gambier	1,012.0	932.0	80.0	Pass only
Route 17	Little River-Powell River	349.0	347.0	2.0	0.4%
Route 18	Powell River-Texada	798.0	673.0	125.0	3.1%
Route 19	Nanaimo Harbour-Gabriola Island	1,278.0	1,188.0	90.0	8.1%
Route 20	Chemainus-Thetis/Penelakut	973.0	882.0	91.0	1.4%
Route 21	Buckley Bay-Denman West	1,386.0	1,269.0	117.0	7.1%
Route 22	Gravelly Bay-Hornby Island	1,063.0	945.0	118.0	3.1%
Route 23	Campbell River-Quadra Island	1,484.0	1,387.0	97.0	6.8%
Route 24	Quadra Island-Cortes Island	534.0	442.0	92.0	11.9%
Route 25	Port McNeill-Sointula/Alert Bay	989.0	897.0	92.0	2.8%
Route 26	Skidegate-Alliford Bay	858.0	745.0	113.0	2.5%
MINOR Routes Total		16,511.5	15,035.5	1,476.0	4.6%



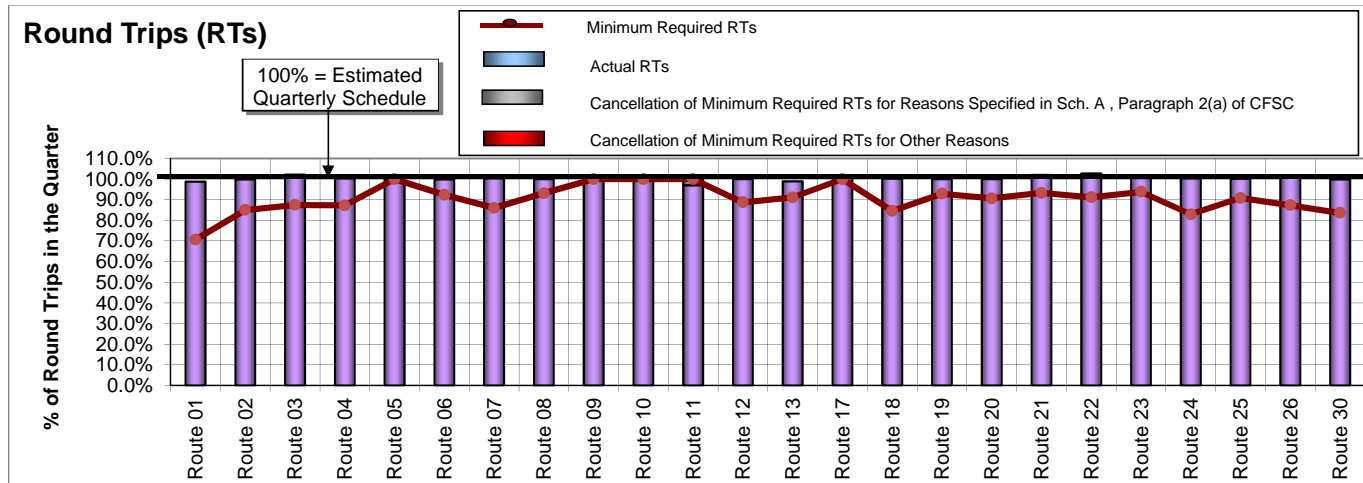
Note: ⁽¹⁾ Route 13 - core service levels include some round trips that are deliverable only 'on demand.'

APPENDIX 4: Round Trip Service Delivery and On Time Performance

Fiscal 2014/15

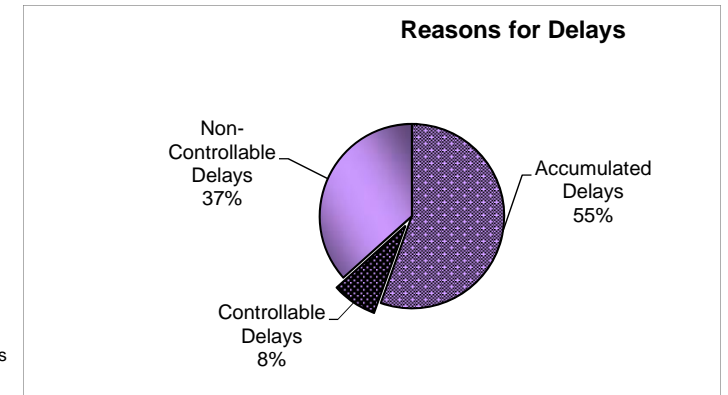
Quarter Ended June 30, 2014

All Routes

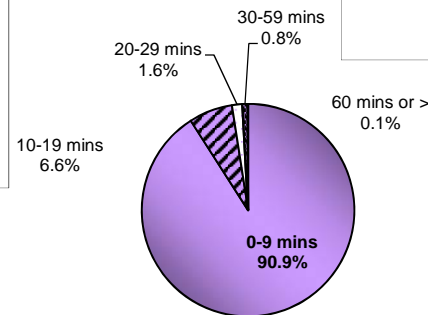


Routes	Route Description	Actual RTs	Minimum Required RTs	Variance (Actual to Minimum)	% Sailings Overloaded
Route 01	Swartz Bay-Tsawwassen	941.0	673.0	268.0	38.7%
Route 02	Horseshoe Bay-Nanaimo	764.0	651.0	113.0	22.9%
Route 03	Langdale-Horseshoe Bay	743.0	636.0	107.0	18.3%
Route 04	Swartz Bay-Fulford Harbour	718.0	625.0	93.0	6.0%
Route 05	Swartz Bay-Gulf Islands	873.0	873.0	0.0	3.9%
Route 06	Crofton-Vesuvius Bay	1,195.0	1,106.0	89.0	1.9%
Route 07	Earls Cove-Salter Bay	654.0	561.0	93.0	1.5%
Route 08	Horseshoe Bay-Bowen Island	1,349.5	1,256.5	93.0	9.1%
Route 09	Tsawwassen-Southern Gulf Islands	192.0	192.0	0.0	2.5%
Route 10 ⁽²⁾	Port Hardy-Prince Rupert	22.0	22.0	0.0	0.0%
Route 11	Skidegate-Prince Rupert	33.0	34.0	-1.0	4.5%
Route 12	Mill Bay-Brentwood Bay	806.0	715.0	91.0	1.5%
Route 13 ⁽¹⁾	Langdale-Keats/Gambier	1,012.0	932.0	80.0	Pass only
Route 17	Little River-Powell River	349.0	347.0	2.0	0.4%
Route 18	Powell River-Texada	798.0	673.0	125.0	3.1%
Route 19	Nanaimo Harbour-Gabriola Island	1,278.0	1,188.0	90.0	8.1%
Route 20	Chemainus-Thetis/Penelakut	973.0	882.0	91.0	1.4%
Route 21	Buckley Bay-Denman West	1,386.0	1,269.0	117.0	7.1%
Route 22	Gravelly Bay-Hornby Island	1,063.0	945.0	118.0	3.1%
Route 23	Campbell River-Quadra Island	1,484.0	1,387.0	97.0	6.8%
Route 24	Quadra Island-Cortes Island	534.0	442.0	92.0	11.9%
Route 25	Port McNeill-Sointula/Alert Bay	989.0	897.0	92.0	2.8%
Route 26	Skidegate-Alliford Bay	858.0	745.0	113.0	2.5%
Route 30	Nanaimo-Tsawwassen	675.0	565.0	110.0	15.0%
All Routes Total		19,689.5	17,616.5	2,073.0	7.6%

Notes: ⁽¹⁾ Route 13 - core service levels include some round trips that are deliverable only 'on demand.'

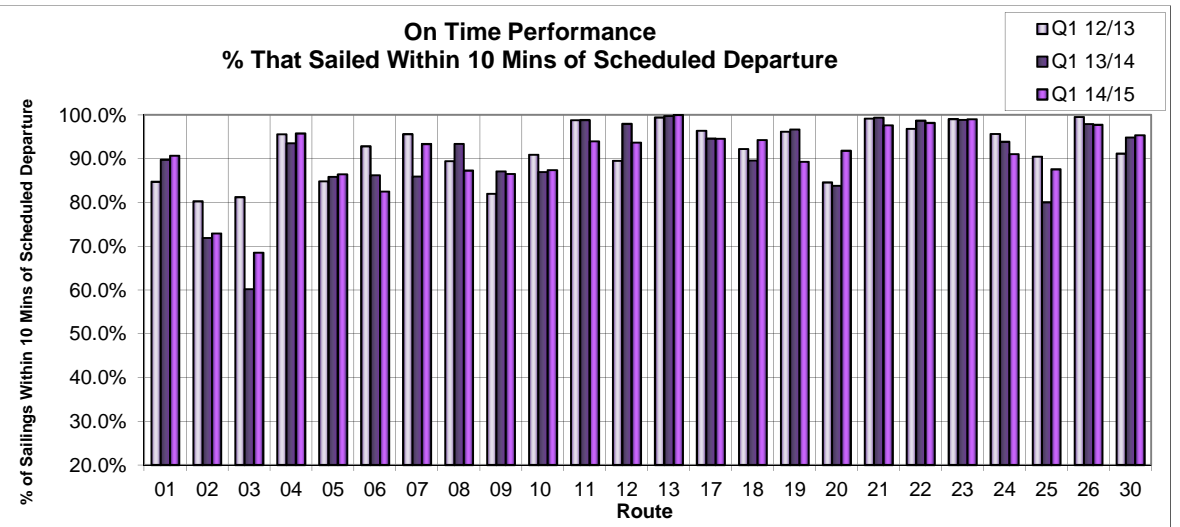


On Time Performance 2014/15 Q1



Controllable = Under the control of the company (loading procedure, fuelling, etc.)
Non-Controllable = Out of the control of the company (bad weather, medical, etc.)
Accumulated = Delays accumulated over the course of the day as a result of an earlier delay

On Time Performance % That Sailed Within 10 Mins of Scheduled Departure



⁽²⁾ Effective April 1, 2014, Route 40 was discontinued as part of the service adjustments outlined by the Province, and replaced with an extension of Route 10. For comparative purposes, fiscal 2013 and 2014 on-time performance for Routes 10 and 40 have been combined.